

6D5N Nature's Masterpiece:
德天独厚：
绿意画卷
南宁 **DETIAN FALLS &**
GREEN NANNING

Nanning | Jingxi | Detian | Chongzuo | Mingshi
南宁 | 靖西 | 德天 | 崇左 | 明仕



NO SHOPPING STOP, NO OPTIONAL,
NO SELLING IN COACH





By The Signature Tours 带您无限探索 Travel Designer Team 中华魅力风情



Dear Valued Guest,

We're always searching for a place to truly slow down. To escape the noise, return to nature — not just to travel, but to heal, quietly and deeply.

This journey takes you to Nanning, Guangxi — a land blessed by nature, where the stunning Detian Waterfall sits like a jewel on the China-Vietnam border.

We call this route Detian Duhou — not just for its name, but for what it represents:
Nature's masterpiece, designed for those who love landscapes and love life.

No rush. No shopping stops. Just time to stay, taste, wander, and breathe.

Detian has its waterfalls. Mingshi has its breeze. This journey has you.

亲爱的旅客，

我们总在寻找一个能让人“慢下来”的地方。远离喧嚣，回到自然；不只是旅行，更是一场身心的疗愈。这一次，我们想带您去一个被大自然深深眷顾的地方 - 广西南宁。

我们为您设计的这条路线，叫做《德天独厚》。灵感来自这趟旅程中最壮观的景点 - 德天瀑布，也是中越边境上的一颗自然明珠。而“得天独厚”，更道出了这片土地令人惊艳的天赋与魅力。这是一趟独家设计的路线，没有走马看花，没有购物站，没有催促的节奏。您可以住得舒适、吃得道地、拍得出片，也可以在自然里放空、在田园里发呆。这不是一趟传统的广西团，而是一趟真正为“热爱生活、热爱生活”的您量身打造的旅行。

跟着我们，一起走一趟 德天独厚 的旅程。去看水的飞扬、山的沉静，去听风穿过稻田的声音，去感受那份我们早已在城市中遗忘的宁静与美好。

德天有瀑，明仕有风，旅程有您



Xiangsi Town
相思湖小镇



Map
地图





Sanjie Liangxiang
三街两巷

6D 5N

NATURE'S MASTERPIECE: DETIAN FALLS & GREEN NANNING

NANNING | JINGXI | DETIAN | CHONGZUO | MINGSHI

DAY 01 KUL ✈️ NANNING

(MOB/LD)

- Arrive in **Nanning**, China's Green City and the heart of Zhuang culture.
- After a hearty dinner, take a walk around **Sanjie Liangxiang**.

DAY 02 NANNING – 275KM – JINGXI

(HB/LL/LD)

- 📍 • **Equan Scenic Area**: it is one of the three most famous springs in Jingxi. The water of Goose Spring gushes from an underground river over 30 meters deep. It flows all year-round, as clear as a mirror, and emerald green in colour – earning it the name "Divine Spring".
- 📍 • **Jiuzhou Ancient Town** is one of the best-preserved historic towns in Jingxi, Guangxi. Explore and join a **traditional embroidered ball DIY**—a cultural encounter with Zhuang heritage.
- Stroll through **Jinxu Ancient Town**, where traditional architecture, vibrant folk performances, and handcrafted local treasures await.

DAY 03 JINGXI – 96KM – MINGSHI

(HB/LL/LD)

- 📍 • **Detian Waterfalls (buggy car & bamboo rafting includes)** – Explore **Asia's largest transnational waterfall** and a national 5A scenic site on the China-Vietnam border. Drift along serene border waters by **bamboo raft** and **enjoy a fragrant cup of coffee** amid the rice fields, immersed in nature's tranquil charm.
**Detian Waterfall has different charms in every season, May to December offers stronger water flow and more impressive views.*
- 📍 • **Mingshi Scenic Area (includes bamboo rafting)** – Surrounded by karst peaks and clear streams, Mingshi features bamboo groves, rice paddies, and rustic villages woven into a poetic southern landscape. Known as the "Hidden Guilin at the Border," the area invites you to **drift down the Mingshi River on a bamboo raft**, taking in the lush scenery and the quiet charm of rural life.
- 📍 • Check-in to **Changliu Mountain Resort Hotel** nestled in the heart of Mingshi Scenic Area – wake up to breathtaking views and unwind in the tranquil beauty of nature.

DAY 04 MINGSHI – 208KM – NANNING

(HB/LL/LD)

- Leisurely walk or cycle through the picturesque landscape of **Mingshi Countryside** and check in at the iconic **Fish Scale Dam** – where cascading waters flow gently in layers, harmonizing with emerald fields and misty green peaks.
- 📍 • **Dongnayuwan Scenic Area**: Known for its clear streams and striking karst landscape, this peaceful bay offers picturesque views and a glimpse into the charm of Zhuang culture.
- 📍 • **Dragon Palace Fairyland**: A living cave with active dripstone formations and dramatic stalactites. Like a natural dragon palace, it captures the beauty and mystery of Chinese dragon culture.

DAY 05 NANNING

(HB/LL/LD)

- 📍 • **Qingxiu Mountain**: A National 5A Tourist Attraction, often called the "**Emerald of the Green City**" and the "green lung" of Nanning. With seasonal blooms and lush landscapes, it's a **top spot for flower viewing**. Climb to scenic viewpoints to take in the natural beauty, and don't miss the **iconic landmarks—Yongzhou Pavilion and Ruyi Lane**.
- Stroll through **Xiangsi Lake Ancient Town**, snap photos by the tranquil lakeside with its charming old-world atmosphere, and soak in the serene rhythm of slow living.
- 📍 • Enjoy a specially arranged **Guangxi Courtyard-style afternoon tea** as a perfect treat for a lazy afternoon.
- 📍 • **"Nanning Night Project"** – A lively blend of local food, shopping, and performances. Stroll, taste, and enjoy the charm of Nanning's vibrant nightlife.

DAY 06 NANNING ✈️ KUALA LUMPUR

(HB/LL/MOB)

- 📍 • Visit & stroll around **Nanning Park & Mingshu Tree Expo**, a variety of rare plants, including a walk-through floral landscape and the distinctive garlic vine archway, offering visitors an immersive experience of natural beauty.
- After lunch, head to airport and depart back home!

Meal Codes:

*MOB=Meals on Board/HB=Hotel Breakfast/LD=Local Dinner/LL=Local Lunch

📍 Exclusive Arrangement

Disclaimer:

Sequences of itinerary are subject to local arrangement. Itineraries, meals, hotels and transportation are subject to change without prior notice.



Yongzhou Pavilion
邕州阁



Nanning Night Project
南宁之夜



Ruyi Lane
如意坊

THE SIGNATURE
TOURS

6天 5晚

德天独厚： 绿意画卷·南宁

南宁 | 靖西 | 德天 | 崇左 | 明仕

第01天 吉隆坡 ✈️ 南宁

(机上用餐/道地晚餐)

- 抵达以壮乡风味闻名的‘中国绿城’，南宁。
- 享受温馨的晚餐后，到三街两巷闲逛打卡。

第02天 南宁 - 275KM - 靖西

(酒店早餐/道地午餐/道地晚餐)

- 📍 **鹅泉景区**：鹅泉是靖西三大名泉之一，鹅泉水从深达30多米的地下河涌出，四季不涸，水清如镜，清澈碧绿，又被称为“神水”。
- 📍 **旧州古镇**是广西靖西市保存较为完好的古镇之一。漫步其间，可感受古朴的壮乡风貌；**亲手制作传统绣球**，体验壮族非物质文化遗产的独特魅力。
- 漫游**锦绣古镇**，赏民族建筑、看民俗表演、逛特色小店。

第03天 靖西 - 96KM - 明仕

(酒店早餐/道地午餐/道地晚餐)

- 📍 **德天瀑布**（含电瓶车，竹筏）-游览位于中越边境的**亚洲第一大瀑布** - 国家5A级景区**德天瀑布**。乘竹筏泛舟于边境山水之间，田野间品一杯香醇咖啡，尽享自然的闲适与诗意。
*德天瀑布四季皆有不同风貌，其中5-12月为水量较丰时期，瀑布尤为壮观。
- 📍 **明仕田园**（含竹筏）- 这里群山环绕、溪水清澈，竹林、稻田与古朴村落交织成一幅如诗如画的南国画卷，被誉为“隐匿在边境的小桂林”。搭乘**竹筏悠游明仕河**，欣赏两岸如屏峰林，感受田园山水间的宁静与惬意。
- 📍 入住位于明仕田园核心地带的**明仕长留山居**，推窗即景，静享山水田园间的惬意时光。

第04天 明仕 - 208KM - 南宁

(酒店早餐/道地午餐/道地晚餐)

- 悠然漫步或骑行于**明仕田园**的秀丽风光之间，打卡这里的**鱼鳞坝**，层层叠叠的河水潺潺流淌，与如黛的山峦、蓝绿的田园相映成趣。
- 📍 **峒那屿湾**：一个因其独特的喀斯特地貌和清澈的溪流而闻名自然湾区。这里山水相映，景色秀丽，是拍摄自然风光和体验壮族民族文化的好去处。
- 📍 **龙宫仙境**：一个仍在“生长”的活体溶洞，滴水活跃，钟乳石密集分布于游道两侧，奇形异状、气势磅礴，宛如天然雕刻的“龙之宫殿”，尽显中国龙文化的神秘与壮美。

第05天 南宁

(酒店早餐/道地午餐/道地晚餐)

- 📍 **青秀山**：国家5A级旅游景区，素有“绿城翡翠”之美誉，也是南宁市的“绿肺”。这里四季更替，花卉绚丽多彩，是南宁赏花的绝佳去处。登高远眺，感受自然山水的灵秀之美。园外还有南宁著名的网红打卡点-邕州阁与如意坊，古色古香的建筑与秀美景致交相辉映，是拍照留念的理想之地。漫步其间，尽享自然与文化的完美融合。
- 漫步于**相思湖古镇**，打卡拍照于古色湖畔之间，感受宁静慢生活的悠然时光。
- 📍 在慵懒的午后，享受一份特别安排的**广西院子下午茶**！
- 📍 **“南宁之夜”文旅步行街** - 集美食、购物、演艺和休闲于一体，边吃边逛、边玩边看，畅享南宁多彩夜生活。

第06天 南宁 ✈️ 吉隆坡

(酒店早餐/道地午餐/机上用餐)

- 📍 到**南宁公园**和**名树博览园**游览参观，园区内种植多种珍稀植物，设有“可步入式”花境景观和蒜香藤景点，在其中穿梭，感受自然之美。
- 享受早餐后，前往机场，准备启程回家！

免责声明：

行程次序以当地旅行社安排为准。行程，膳食，住宿，交通等可能会因不可抗拒因素而更动，恕不另行通知。



Coffee at Detian Falls
德天瀑布咖啡

Must See Attractions

经典地标 深入探索

Carefree | Enjoy relaxation, truly appreciate the world
悠游 | 享受放松 感慨世界美好

Capture | The color & essence of each journey
收获 | 旅途中的色彩和精髓

Cozy | Vibes to create joyful moment together
温馨 | 共创愉悦片刻



鹅泉景区 Equan Scenic Area

One of Southwest China's most renowned natural springs and a nationally rated 4A attraction. Named after the white geese that glide gracefully across its emerald waters, it offers a serene blend of nature and culture. Fed by underground karst springs, the water remains crystal-clear year-round, forming a jade-like pool surrounded by lush mountains. Visitors can stroll across ancient bridges, explore traditional Zhuang and Miao architecture, and capture iconic reflections at scenic spots like the Moon Bridge and Turtle Stone.

国家AAAA级旅游景区，被誉为“西南三大名泉”之一，因泉中常年有白鹅嬉戏得名，是靖西最具代表性的山水泉景之一。这里山清水秀，泉水从地下石缝中涌出，清澈透明，终年不竭，汇成一汪碧绿如玉的泉潭，仿佛镶嵌在群山环抱之间的一颗翠玉。景区内古桥、石板道、苗壮民居点缀其间，还设有“月亮桥”“神龟石”等极具民族风情的地标，让人仿佛穿越时空，走进一幅活着的山水画。

德天瀑布

Detian Waterfalls

Located on the China-Vietnam border in Daxin County, Chongzuo, Guangxi, is a National 5A Tourist Attraction and the largest transnational waterfall in Asia. It connects seamlessly with Vietnam's Ban Gioc Waterfall, creating a breathtaking natural spectacle. With a drop of over 70 meters and a main cascade over 200 meters wide, Detian is especially magnificent during the rainy season. Enjoy a bamboo raft ride on the clear waters beneath the falls, where you can get up close to the roaring cascade, surrounded by lush greenery and towering cliffs. After the adventure, unwind with a cup of hand-brewed coffee at a charming rice-field café, nestled among golden paddies and karst peaks — a serene moment of slow living in the borderland countryside.

***Detian Waterfall has different charms in every season, May to December offers stronger water flow and more impressive views.**

位于广西崇左市大新县中越边境，是国家5A级旅游景区，也是亚洲最大的跨国瀑布，与越南的板约瀑布相连，景观壮丽、气势磅礴。瀑布落差超过70米，主瀑宽达200多米，雨季时水流浩荡，蔚为壮观。周边群山环抱、绿树成荫，天然山水与瀑布交相辉映，构成一幅绝美的边境画卷。这里不仅是自然爱好者的天堂，也是摄影、观景和深度体验壮乡风情的理想之地。

在这里乘竹筏穿行于瀑布下方的碧水之间，近距离感受水雾翻涌、飞瀑如练的震撼景象，尽享人与自然的和谐共处。游览之余，特别安排前往景区周边的“稻香咖啡”田园咖啡体验点，在稻田与山峦环绕中，品一杯香浓手冲咖啡，享受片刻宁静与诗意慢生活。

***德天瀑布四季皆有不同风貌，其中5 - 12月为水量较丰时期，瀑布尤为壮观。**





明仕田园 Mingshi Village

Located in Daxin County about 20 km from Detian Waterfall, is often described as a "hidden paradise" of karst countryside. With lush mountains, winding rivers, and tranquil rice paddies, it has served as a filming location for famous Chinese dramas like *The Journey of Flower* and *Liu Sanjie*. Enjoy a bamboo raft ride through idyllic landscapes, drifting past limestone peaks and bamboo groves. Walk or cycle along scenic village paths, where time seems to slow down among the rice fields and rustic homes. Don't miss the iconic Fish Scale Dam, a beautifully layered stone weir perfect for photography, especially when the water cascades over its steps like dancing silk.

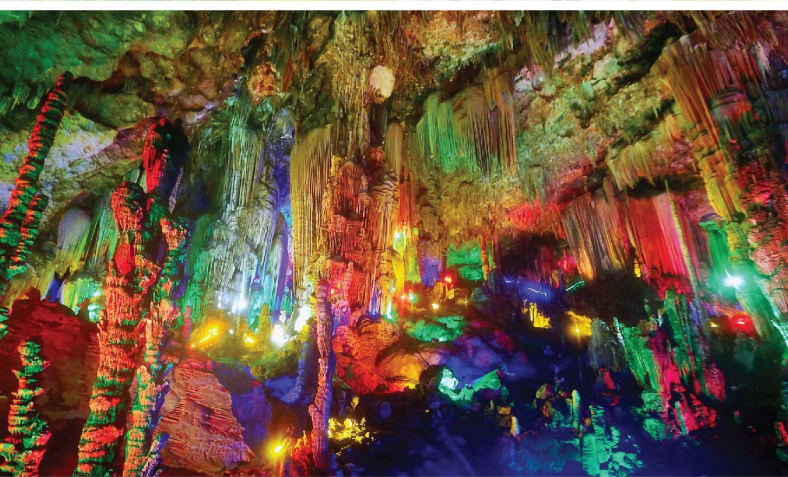
位于广西大新县，距德天瀑布约20公里，是一片被誉为“隐世桃源”的喀斯特田园风光地带，常作为电影《花千骨》《刘三姐》等取景地。这里山清水秀，田园交错，竹林掩映，尽显壮乡宁静风情。体验悠然竹筏漂流，顺流而下，穿行于山水之间；还可选择漫步或骑行于田埂小道，近距离感受水田倒影与农舍炊烟的原生态画卷。此外，不容错过的还有网红打卡点 - 鱼鳞坝。



青秀山 Qingxiu Mountain

Located southeast of downtown Nanning, Qingxiu Mountain is a nationally rated 5A tourist attraction, known as the "green lung of the city". Blanketed in lush subtropical forest, the park features a wide variety of themed botanical gardens, including the Orchid Garden, Bamboo Garden, Palm Garden, and Peach Blossom Island, offering colourful blooms throughout the year. Beyond its natural beauty, Qingxiu Mountain also showcases rich cultural elements. Highlights include the Guanyin Zen Temple, the Longevity Culture Plaza, and the iconic Longxiang Pagoda, which offers panoramic views over Nanning and the winding Yong River.

位于南宁市区东南，是国家AAAAA级旅游景区，被誉为“南宁之肺”“城市中的天然氧吧”。景区以亚热带植被为背景，拥有秀美的自然山林、丰富的植物园群、清新的空气与开阔的城市视野。园内分布有兰园、竹园、棕榈园、桃花岛等多个专类园区，一年四季花开不断，是市民与游客休闲观景、拍照赏花的绝佳胜地。除了自然风光，青秀山也融合了深厚的人文底蕴，如观音禅寺、龙象塔、长寿文化广场等，静谧庄严之中流露出文化的宁静与厚重。



龙宫仙境

Dragon Palace Fairy

A hidden gem in Jingxi, it stuns visitors with its surreal beauty. Inside this vast limestone cave, crystal-clear stalactites take on dramatic forms — like dragons coiled and palaces rising from stone. Illuminated by ethereal lighting, the cave glows with shifting colours, turning nature's raw wonder into a fairytale realm. A truly immersive journey through light, stone, and shadow.

靖西一处低调却震撼的小众秘境，因奇幻岩洞、地下暗河、钟乳石与梦幻灯光交织而得名。步入“龙宫仙境”，仿佛进入隐于山体深处的地下宫殿，晶莹剔透的钟乳石造型奇特，如神龙盘绕、宫阙林立。灯光巧妙映衬，自然与科技融合，流光溢彩、如梦似幻，带来一场沉浸式的视觉盛宴。

旧州古镇制作手工绣球

DIY Zhuang Embroidered Ball at Jiuzhou Ancient Town



Experience a hands-on embroidered ball (xiù qiú) workshop in the hometown of Zhuang Embroidered Balls, guided by local artisans in their family-owned studios. Thread by thread, create your own symbol of blessing, love, and cultural beauty. Your handmade embroidered ball will be a meaningful keepsake — a personal memory stitched into the spirit of Guangxi's living heritage.

特别安排在中国的“绣球之乡”旧州古镇内进行绣球DIY体验，由当地绣娘手把手教学，亲身感受这项承载着祝福与情意的非遗技艺。一针一线，缝制的不仅是吉祥的绣球，更是一段独属你的旅程回忆。体验结束后，绣球可随身带走，作为心意满满的纪念品。



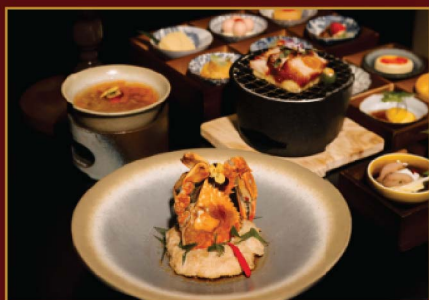
Taste Indulge 味蕾

Special Arrangement 特别安排:

Yang Banquet · Yongzhou 1939

漾宴 · 邕城1939

WORTH RMB 258



As night falls, step into a different era – Yongzhou in 1939. Donning your choice of elegant Republic-era costumes, you'll be transported into a nostalgic world brought vividly to life. As you dine on a carefully crafted local menu, live actors weave through the tables, bringing to life tales of the city's past through performance, music, and ambiance.

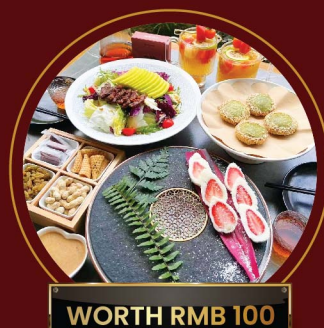
在南宁的夜色中，走进《漾宴 · 邕州 · 1939》，换上精美民国风服饰，仿佛置身于1939年的邕州街头。餐桌之间，剧情展开。演员穿梭于宾客之间，情节在灯光、布景与音乐中徐徐推进。你吃的不是一道道菜，而是那一段段邕州旧梦中的故事 - 有市井烟火，也有旧时光的温柔情愫。

TWENTY-FOUR FLAVOURS

二十四味

GUANGXI COURTYARD-STYLE

AFTERNOON TEA 广西院子下午茶



WORTH RMB 100

Days 天数	BREAKFAST 早餐	LUNCH 午餐	DINNER 晚餐
1	-	机上用餐 Meal On Board	特色吊烤鸭风味 100 Specialty Roast Duck Flavor
2	酒店早餐 Hotel Breakfast	靖西风味 70 JingXi Cuisine	越式风味 90 Vietnamese Cuisine
3	酒店早餐 Hotel Breakfast	土鸡风味 70 Country-Style Chicken Flavour	明仕百香果风味 90 Mingshi Passion Fruit Flavour
4	酒店早餐 Hotel Breakfast	明仕风味 70 Mingshi Cuisine	《漾宴 · 邕城1939》258 Yang Banquet · Yongzhou 1939
5	酒店早餐 Hotel Breakfast	粤式风味 70 Cantonese Cuisine	南宁二十四味 200 Modern Chinese Heritage Cuisine
6	酒店早餐 Hotel Breakfast	南宁风味 70 Nanning Cuisine	机上用餐 Meal On Board

Remarks/备注:

All pictures in brochure are for illustration purpose only/行程上的图片仅供参考

** MEAL COST - RMB / 餐标 - 人民币 **



Accommodation 住宿



Embark on a complete journey at 4-star & 5-star hotel, offering a quality & comfortable stay.
全程安排四+五星级酒店, 让您在整个旅程中享受到有质量且舒适的住宿环境。



Changliu Mountain Resort Hotel



Nanning Marriott Hotel



Changfeng International Hotel

STAY 留宿	LOCATION 地点	HOTEL 酒店	RATED 等级	REMARKS 备注
1 Night	Nanning	Nanning Marriott Hotel	★★★★★	Nestled in the heart of Nanning, with walking distance to major malls.
1 Night	Jingxi	Changfeng International Hotel	★★★★★	Highest-ranked hotel of Jingxi in Trip.com!
1 Night	Mingshi	Changliu Mountain Resort Hotel	★★★★★	Rooms with mountain view!
2 Nights	Nanning	Nanning Marriott Hotel	★★★★★	Nestled in the heart of Nanning, with walking distance to major malls.

THE SIGNATURE TOURS

Sister Brand of



Travel Partner:

thesignaturetours

The Signature Tours 卓越旅程

The Signature Tours